

# MS ISLAND SKY

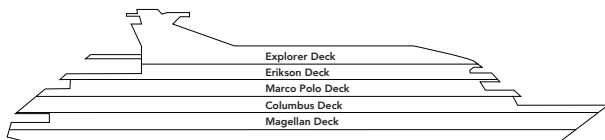
SHIP INFORMATION



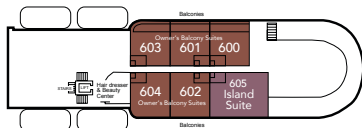
NOBLE CALEDONIA

# MS ISLAND SKY – Vessel Technical Details

Passengers: 118  
 Length: 90.60 metres  
 Width: 15.30 metres  
 Registered: Bahamas  
 Crew/Staff: 70  
 Year built: 1992  
 Language: English  
 Gross Tonnage: 4200 tonnes  
 Net Tonnage: 1262 tonnes



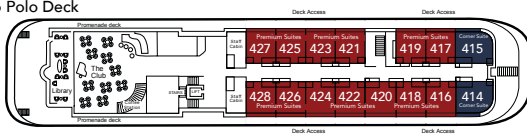
Explorer Deck



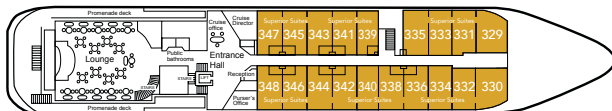
Erikson Deck



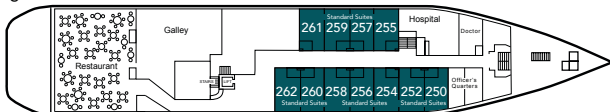
Marco Polo Deck



Columbus Deck



Magellan Deck



- Standard Suites
- Corner Suites with Deck Access
- Owner's Balcony Suites
- Superior Suites
- Deluxe Balcony Suites
- Island Suite
- Premium Suites with Deck Access

# MS ISLAND SKY

## INFORMATION DIRECTORY

We are delighted you have chosen the MS Island Sky for your upcoming voyage. The 118-passenger, all-suite vessel is one of the finest small ships in the world and benefits from unusually spacious accommodation, public areas and outside decks.

You will find the atmosphere on board akin to a private yacht or country hotel with a little music in the lounge or bar after dinner, talks from our onboard team and informative port briefings from your Cruise Director or Expedition Leader. After a day of exploration ashore, you will return to the comfort and peace of a well-run and exceedingly comfortable ship.

Along with the Captain and officers and the Noble Caledonia team, our crew of 70 are dedicated to offering you the best possible experience during your time on board.

We hope this information booklet answers any questions you may have pertaining to the vessel and wish you a pleasant voyage.

## **ADAPTORS**

Adaptors for hairdryers, mobile phones etc. can be obtained from the Reception Desk, located on Deck 3 midships. These should be returned to Reception at the end of the cruise and are the property of the MS Island Sky.

## **AIR-CONDITIONING**

The entire ship is air-conditioned. All cabins feature individual temperature controls. In order to keep the air-conditioning system working efficiently, please keep doors closed when in use.

## **ANNOUNCEMENTS**

The ship uses a public address system to advise guests of all important information and activities during the cruise. Announcements can be heard throughout the public areas of the ship and in all cabins.

## **CABINS**

On board there are 59 exceptionally spacious and well designed cabins. All feature a sitting area, en suite bathroom with marble topped vanity unit and walk-in shower, spacious wardrobe, dressing table. Cabins on Explorer (Deck 6) and Erikson (Deck 5) have private balconies. Cabins on Marco Polo Deck (Deck 4) have tinted sliding doors for enhanced views and quick access to the deck if any wildlife is spotted.

### **All cabins have the following facilities:**

- Dressing gowns and slippers
- TV
- Electrical outlet
- Hair dryer
- Heating and air-conditioning (individually controlled)
- Mini bar & Fridge – upon request it can be filled with soft drinks and beer for purchase. The mini bar is stocked on arrival and replenished daily. Price list can be found in the cabin.
- Safe
- Molton Brown toiletries: hand soap, shower gel, shampoo, hair conditioner and body lotion
- Telephone

Each cabin has two twin beds that can be reconfigured to form a double bed upon request. Please advise the Reservation Department or the Reception if you want a double bed.

Cabins are serviced each morning by your cabin attendant and again in the evening when the beds are turned down.

Please note that on MS Island Sky, all cabins have a shower but none have baths.

## **COMMUNICATIONS**

If you wish to contact the ship please call 001 954 672 6785. This is a US number so calls to this number are charged at an international rate. There is a phone in your cabin, which has access to an outside line. Outgoing call costs will be advised on board. You can make cabin-to-cabin calls free of charge (*see section on Telephone Calls*). You can contact the ship by email at [rec@is.salenship.com](mailto:rec@is.salenship.com) please indicate passenger name and cabin number as the subject.

There are two computers with complimentary internet access in The Library. In addition Wi-Fi is available in The Library, public areas and in passenger cabins. In order to access the Wi-Fi you will need to bring your own laptop, tablet etc and purchase an internet card which are available to buy at reception. Depending on the ship's location, please note that there may be times when the connection is very slow or is disrupted and the same level of connectivity that you enjoy at home cannot be expected on board. Please also follow the instructions about logging off carefully in order not to waste any minutes.

## **DAILY PROGRAMME**

A Daily Programme, detailing the following day's arrangements as well as any specific information about the day's activities is produced on board and delivered to your cabin daily.

## **DIETARY REQUIREMENTS**

If you have any dietary requirements such as vegetarian, low salt, gluten free and low cholesterol, please notify the Reservations Department. We regret that these, and any other special dietary needs, cannot be guaranteed. If you have any specific or special foods that you require we recommend that you take some with you although we will endeavour to accommodate your needs. Once on board, please speak to the Chef or the Maitre D' at dinner on your first night on board to reconfirm your needs.

## **DINING AND DRINKING**

Breakfast, Lunch and Dinner are served in the Restaurant. During good weather, early riser's coffee, breakfast, lunch and dinner may also be served on The Lido Deck. Afternoon tea is served in The Club or in The Lounge depending on activities. Complimentary tea, coffee and biscuits are available self-service 24 hours a day in The Club. House wine, beer and soft drinks are included at lunch and dinner. MS Island Sky operates an open seating policy which greatly enhances the convivial atmosphere on board. The Restaurant has table configurations of 8, 6, 4 and some 2's. Room service is not available on board. As we operate an open seating policy, we regret that reservations cannot be made. Please note that passengers are not permitted to consume their own supplies of alcohol on board. Water is safe to drink on board and is treated with chlorine. A complimentary bottle of water is provided in your cabin upon embarkation and can be replenished upon request.

Special dietary requests such as vegetarian, low salt and low cholesterol should be made with Noble Caledonia in advance. However, we recommend that you contact the Maitre D' once on board to reconfirm such requests. We regret that these, and any other special dietary needs, cannot be guaranteed. If you have any specific or special foods that you require we recommend that you take some with you.

## **DISABLED FACILITIES**

There is a elevator/lift, but the ship does not have facilities for disabled or wheelchair dependent passengers. Additionally, most shore excursions involve some walking and some excursions are walking tours only. There is no chair lift on board and access to the ship is by gangway.

## **DISEMBARKATION**

Your Cruise Director / Expedition Leader will provide you with detailed disembarkation information prior to the end of your cruise. This will include transfer information (where applicable). If you should have any specific queries, please do not hesitate to contact the Cruise Director / Expedition Leader as soon as possible after embarkation.

## **DRESS CODE ON BOARD**

The dress code on board is defined as casual. During the day, comfortable and casual attire is appropriate. The evenings are smart casual. Jackets and ties are not required. However, we kindly ask you to refrain from wearing shorts during evening meals in the Restaurant.

You may wish to wear something a little dressier for the Welcome and Farewell Dinners, for example, a jacket and tie for gentlemen and a dress for ladies. No "black tie" is necessary.

It is recommended to wear footwear at all times whilst on board.

## **ELECTRICITY**

Voltage is 110V/60Hz (American standard) and a 220V razor socket. This is only suitable for low voltage electrical appliances, e.g. mobile phone or camera charger. We recommend that you bring a two-pin American adaptor for the 110v plug. Please note that the use of personal hairdryers, clothing irons, coffee makers, curling tongs, etc. in the cabins is strictly forbidden as they may damage the ship's electrical system. Hairdryers are provided for your convenience in the top right hand drawer of your dresser.

If you require electrical medical equipment, please notify the Reservation Department as soon as possible.

## **GOING ASHORE**

Wait in public areas or in your suite until an announcement is made with instructions to disembark. Sailing times for each port are listed in the Daily Programme. Please note sailing times and ensure that you return back to the vessel at least 30 minutes prior to departure. In some ports a passport or port landing card must be carried when going ashore. This will be announced over the PA System if required. If the ship is in a remote area and you hear a continuous blast of the ship's horn then please return immediately to the landing site.

When leaving the ship at any time while in port always ensure you have checked IN/OUT at the gangway.

## **HAIR & BEAUTY SALON**

MS Island Sky has a hairdresser providing haircuts and hairstyling. Some beauty treatments and massage are also available. Appointments for hair styling can be made on board only by dialling 9 / 301 from you cabin or at the Reception Desk. Fees for all treatments are available at Reception and will be charged to your onboard account. Each cabin is equipped with a hairdryer, this can be found in the right hand top drawer of the dresser.

## **HEALTH & HYGIENE**

In order to maintain health standards you will find hand sanitizers at key positions around the ship particularly at the entrance to restaurants and near the gangway. We kindly ask you to use these regularly.

## **LAUNDRY SERVICE**

Laundry service is available on board. Laundry bags and a price list can be found in the wardrobe in your cabin. Please complete the laundry list and leave it together with the bag of dirty laundry on your bed. Your laundered items will be returned within 24 hours. There are no public launderette or ironing facilities on board. In the interest of safety we ask that you do not use an electric iron in your suite. An ironing service is available at reasonable cost. Dry cleaning facilities are not available on board.

In the interest of the environment, towels will not be automatically changed every day. We ask that you put used towels on the bathroom floor if you wish them to be changed for fresh towels. Towels left hanging on the towel rack will not be changed.

## **LIFT**

All passenger decks can be reached by lift/elevator. Please do not use the elevator in the case of a fire or an emergency.

## **LOST PROPERTY**

Before you disembark the ship, please check your cabin to ensure you do not leave anything behind.

On board the ship, any liquids, cosmetics, paper(s) and perishable items left behind will be disposed of immediately. Any books left on board the ship will be incorporated into the ship's library or donated to charity. Other items left behind on the ship will be kept on board for 1 month or 2 cruises (whichever is the longer period), and after this period, any unclaimed items will be given to a local charity at the next main port the ship visits.

If you discover you have left any items behind, please contact Noble Caledonia within 21 days of disembarking. If we are able to recover your item(s) we will contact you to arrange delivery or collection, and any costs incurred will be at your own expense.

## **MAIL**

Although reception staff are happy to post letters on your behalf, they may not be able to do so straightaway or at the port of call at which you make such a request. Some postal services are unreliable and many letters or postcards that you ask to be delivered on your behalf may be delayed or even lost en route. Under no circumstances can we be held liable for such occurrences.



## **MEDICAL FACILITIES**

Medical services are available 24 hours a day. There is a doctor on board, and crew members are trained in first aid. Cabin visits by the ship's doctor are available. Please note that all consultations and services are charged for. To arrange an appointment with the ship's doctor please contact Reception by dialing 9/301\* or in an emergency 500. It takes some people longer to find their sea legs. Sea sickness tablets are available from Reception, and should be taken at least one hour prior to departure.

## **MINI BAR**

For your convenience a Mini Bar facility has been set up in your suite on a chargeable basis. Items consumed during the cruise will be charged to your onboard account. Your Stewardess will restock your mini bar on a daily basis and replenish consumed items. The mini bar price list is placed in the cabinet of your mini bar. The final statement will be delivered to your cabin in the early morning of your disembarkation.

## **NEWS**

News channels are available on your cabin TV and in addition daily news bulletins can be found at Reception and in The Library.

## **NOBLE CALEDONIA TEAM**

Throughout your cruise you will be accompanied by your Noble Caledonia team who will be happy to assist you with any queries or requests you may have.

## **ONBOARD ACCOUNT**

All passengers will have their own "ship account" which allows you to sign a receipt for any expenses and then settle your bill at the Reception Desk at the end of the cruise. You will need to register your card at Reception shortly after sailing. If you are sharing a suite with a friend and would like separate bills, please inform Reception. Prices on board are shown in British Pounds. All final accounts will be presented in British Pounds. Your ship's account can be paid by:

- Credit Card (Visa, MasterCard or American Express). A 2% charge will be applied to all payments made by credit card. By their bank.
- Cash (British Pounds, Euros or US Dollars).
- Travellers' Cheques (British Pounds, US Dollars or Euros).

Debit cards and prepaid credit cards are not normally accepted.

## PASSPORTS

All Passports are collected by the Purser upon embarkation. Passports are necessary to facilitate immigration formalities at each port of call and are returned at the end of the cruise.

## PUBLIC AREAS

**The Club** – Located on Deck 4 aft, The Club features the main bar and a 24 hour tea and coffee station. A quiet place to meet friends or relax during the day. In the evening our onboard resident pianist plays before and after dinner.

**The Library** – Located on Deck 4 aft. In The Library you can find a well stocked selection of reference books pertaining to the destinations. Fiction books, games and playing cards are also available for your pleasure. Novels brought on board may be exchanged with other books in the paperback library. Should you wish to donate any books which you may have brought with you, we will be happy to add these for the pleasure of future guests. Reference books may not be removed from the ship. In addition, a selection of DVDs are available to play on your cabin TV. Please take the empty DVD box to Reception to collect the DVD disk. Please return all borrowed materials as soon as you have finished using them.

**The Lounge** – Located on Deck 3 aft. Daily Briefings by the Cruise Director or Expedition Leader are given in The Lounge which is fitted with multiple screens and presentation equipment. Informative talks from the Guest Speaker or Expedition Team are also given here.

**Observation Deck & Sun Bathing** – On the Explorer Deck, Deck 6, there is an area for sun loungers ideal for sunbathing as well as a forward facing observation platform.

**Promenade Deck** – MS Island Sky has a walk around Promenade Deck, on Deck 4. We kindly ask for your consideration to those guests whose cabins are located on and beneath the Promenade Deck. Please use the deck for walking / jogging between the hours of 08h30 – 21h00.

## QUESTIONNAIRE

Your comments are important to us therefore before your cruise ends, you will receive a questionnaire. We are always looking for ways to improve your holiday experience and appreciate the time you take to complete the questionnaire. Kindly hand your completed questionnaire in at Reception.

## **SAFE**

There is a safe in every suite located in the closet. The safe can be programmed with your own code, instructions can be found inside the closet door. We recommend that you leave money and other valuables in the safe. Kindly remember to remove all items from the safe before disembarking the ship at the end of your cruise.

## **SAFETY DRILL & SAFETY**

International Maritime Law requires a lifeboat safety drill to take place prior to sailing. All guests must attend this compulsory and important exercise. Please listen for the announcements. During the drill, all ships services will be suspended. Your assigned lifeboat station, location of your life jacket and the signal for lifeboat and fire drills are clearly explained on the emergency card posted on the back of your suite's door. Life jackets are located in your suite. During the safety drill you will be shown how to wear the life jacket. It is essential that you take certain safety precautions while on board:

- Walk, never run and be especially careful on wet and slippery decks.
- Ladies are advised to wear low heeled shoes especially on deck.
- Footwear should be worn at all times.
- Hold on to the handrails in passageways and stairways.

## **SHIP'S ID CARD**

These personal ID cards with essential information are issued to each guest during embarkation. Please ensure you remember to check in and out at the gangway with the crew member on duty in order to ensure that you are on board prior to sailing.

## **SMOKING POLICY**

The MS Island Sky offers a smoke-free cruise environment. Smoking is not permitted inside the ship, including the balcony areas. Smoking is only permitted in the designated area outside on Deck 4 aft. Please never throw any cigarette ends overboard – the breeze could carry the smouldering end back on board and start a fire. We thank you for your cooperation in this matter.

## TELEPHONE CALLS

Calls to other cabins can be made free of charge by dialing the cabin number. Lift the handset and dial the cabin number. If you wish to make an outside call, please check at Reception to purchase a prepaid telephone card and instructions. Costs are available from Reception and charges are automatically billed to your onboard account.

## TELEPHONE DIRECTORY

THE CLUB	Ext: 401
RECEPTION	Ext: 9/301
RECEPTION AFTER HOURS	Ext: 500/501
THE RESTAURANT	Ext: 211
SUITE STEWARD/ESS	Ext: 9/301
IN CASE OF AN EMERGENCY	Ext: 500/501
HOSPITAL	Ext: 201

## TELEVISION

All suites are equipped with a flat screen television with a built-in DVD player which can also play CD's. DVD's are available to borrow from The Library, please take the empty DVD box to Reception to collect the DVD disk. DVDs are configured to Region 2.

## TOILETRIES

Molton Brown shampoo, hand soap and shower gel are provided in your bathroom. If you have forgotten anything ie. toothpaste, please ask Reception, who have a selection of items available for purchase.

## VISITORS

For the safety and security of all passengers no visitors are allowed on board the ship.

## VISITING THE BRIDGE

At times Bridge visits may be possible. If visiting the Bridge, please note this is a working area and access may sometimes be restricted.

## WAKE UP CALL

Wake up calls can be requested through the Reception Desk by dialling 9 or 301 before 11pm.

## **WATER**

Currently the MS Island Sky uses 54,000 bottles of water a year. In order to reduce the damage caused to the environment by waste plastic, we are replacing plastic bottled water where possible with reusable water bottles. The water bottles are for your use during the cruise and we kindly ask you leave them in your cabin at the end of the cruise. The bottles can be filled from the tap – the tap water is safe to drink – or from the water station in The Club. Some bottled water will be available in your cabin on arrival and can be replenished upon request.

## **ZODIAC OR LOCAL BOATS TO TENDER ASHORE**

Some destinations may require the use of the ship's Zodiacs or local tender boats to go ashore. Guests will be advised where and when to meet the Zodiac or local tender boat to go ashore. Please ensure that your hands are free at all times and accept the assistance given by the crew on board the MS Island Sky when boarding tenders / Zodiacs. A Zodiac safety briefing will be given.

Please note: The information contained in this booklet is accurate and correct to the best of our knowledge at the time of going to print. Noble Caledonia accepts no responsibility for any errors or omissions and none of the facilities or features of the vessel described herein which are not specifically described in our advertisements and on your holiday invoice as being included in your holiday price will be deemed to be included in your holiday package. If you would like further information about the vessel or about any of your holiday arrangements, please do not hesitate to contact us.





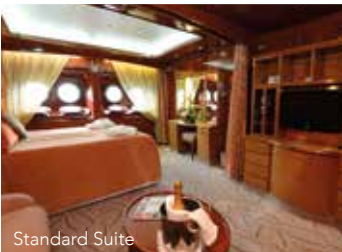
Deluxe Balcony Suite



The Club



The Restaurant



Standard Suite



Zodiac Cruising



Deck Buffet



Zodiac Launch



The Library



Observation Deck



# NOBLE CALEDONIA

2 Chester Close, Belgravia, London, SW1X 7BE  
+44 (0)20 7752 0000 | [info@noble-caledonia.co.uk](mailto:info@noble-caledonia.co.uk)  
[www.noble-caledonia.co.uk](http://www.noble-caledonia.co.uk)